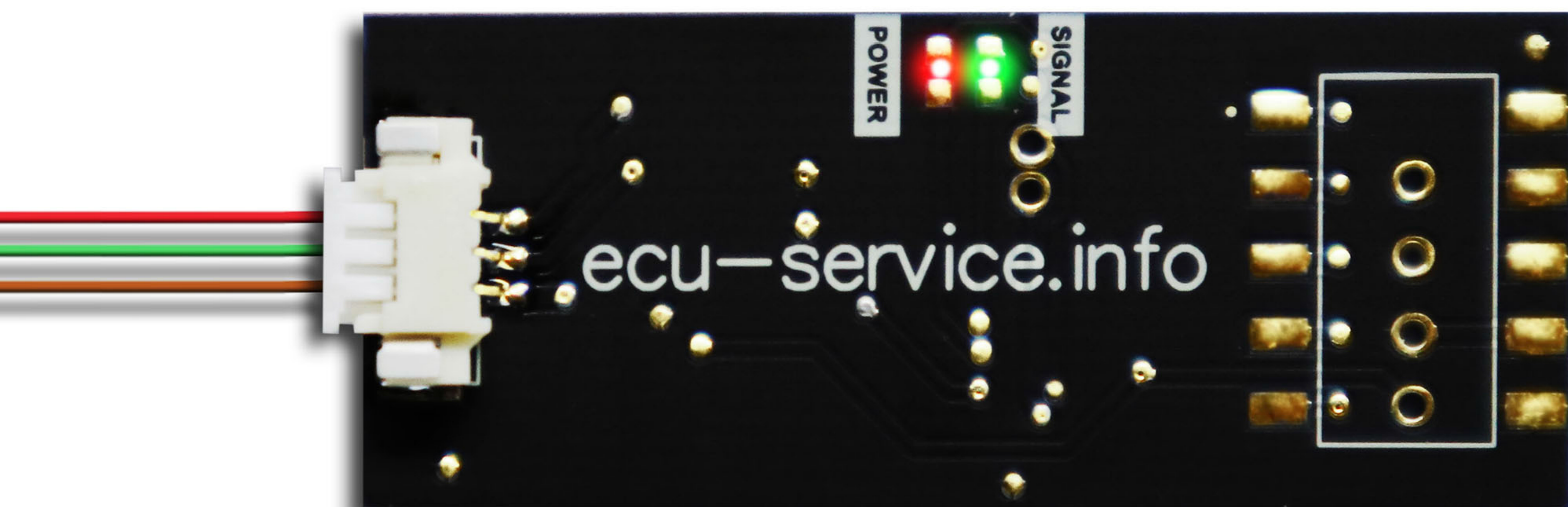




DAWEOO 2

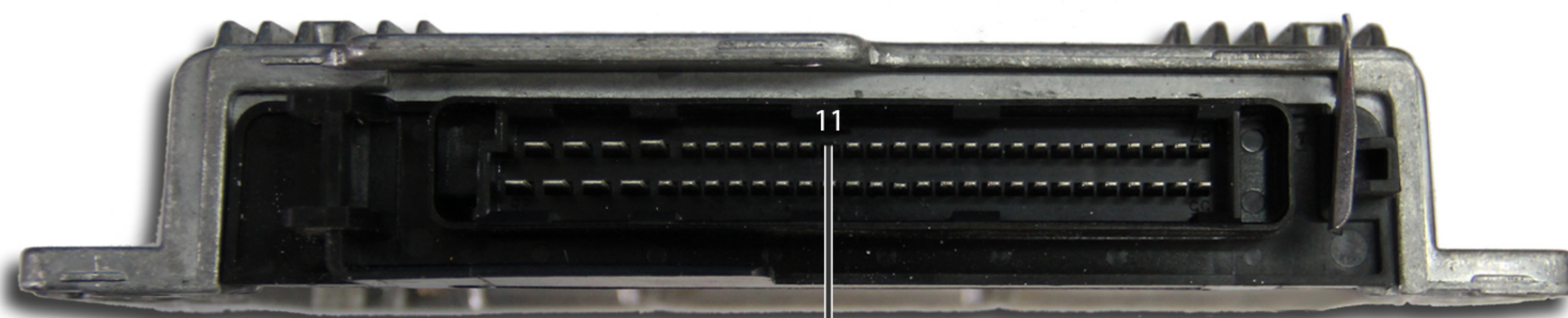
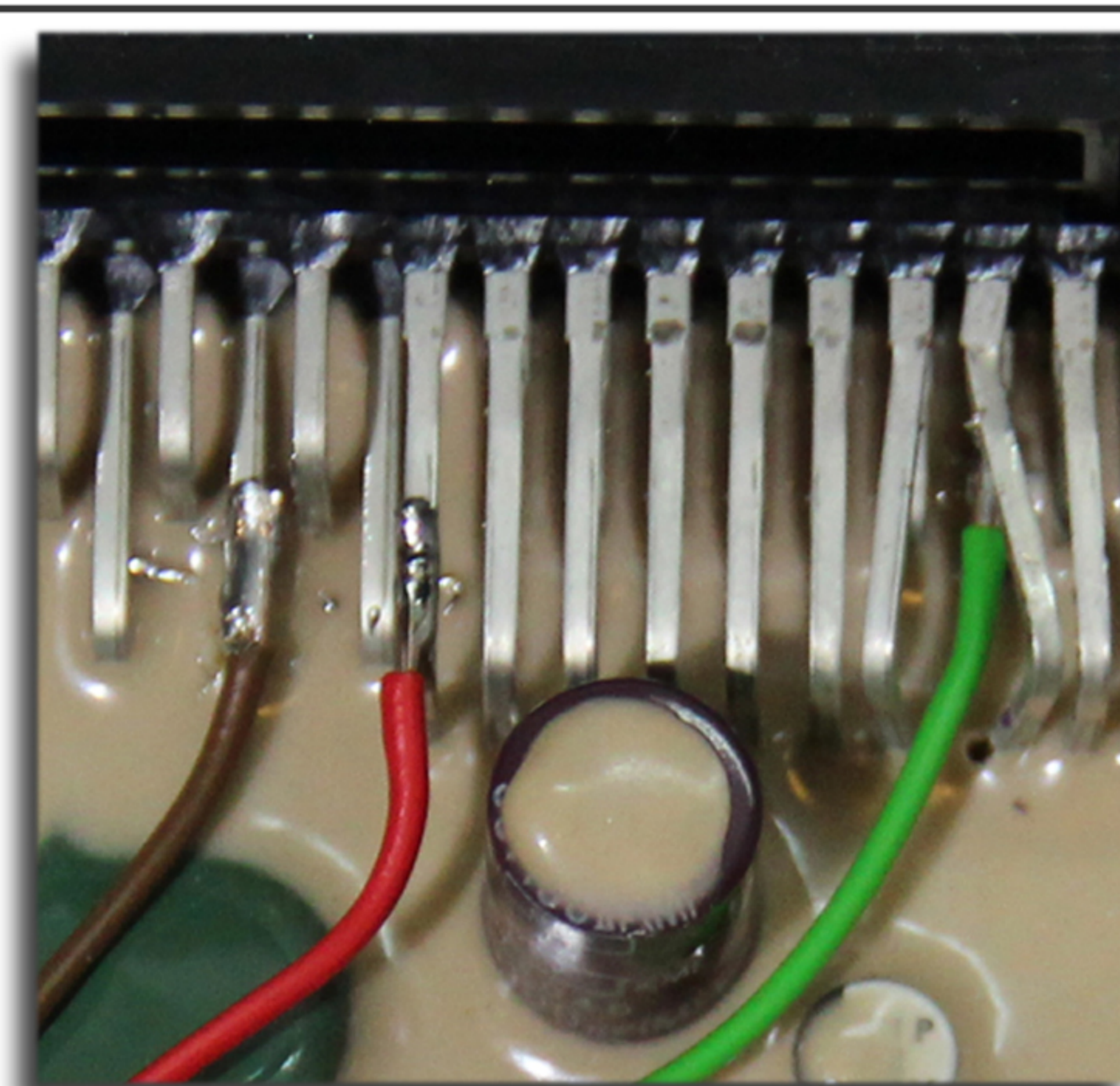
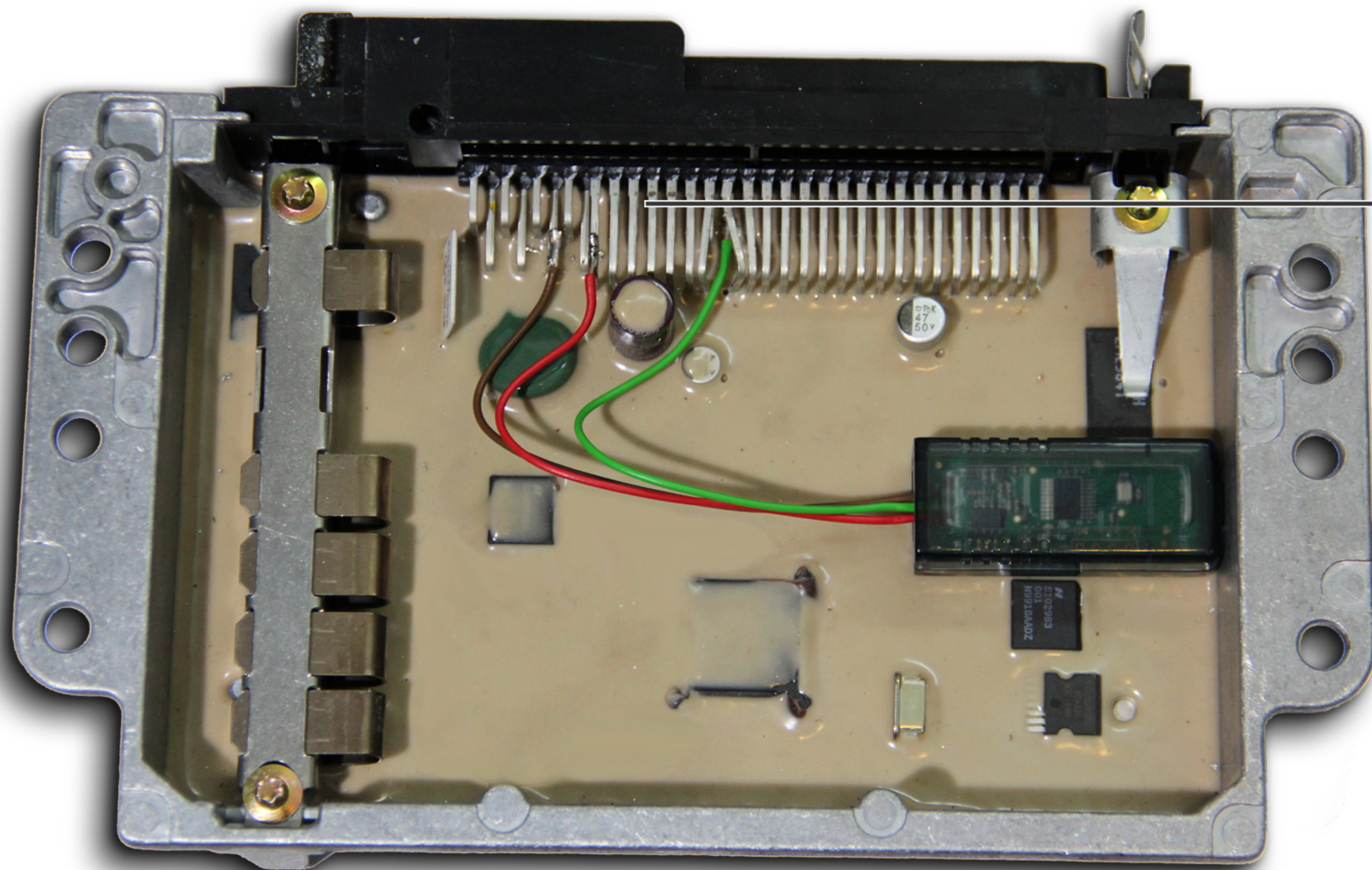


This emulator replaces damaged immo in:

Matiz SIEMENS ECU
Matiz KEMSCO ECU
Tacuma KEMSCO ECU
Chevrolet Spark D32 ECU
0.8ccm Lanos hybrid ECU

1.4 OHC Rezzo hybrid ECU
2.0 16V DOHC Kalos SIRIUS D42 ECU
1.2 Chevrolet Aveo 4R ECU
1.2 Chevrolet Aveo DELPHI ECU

Matiz SIEMENS ECU



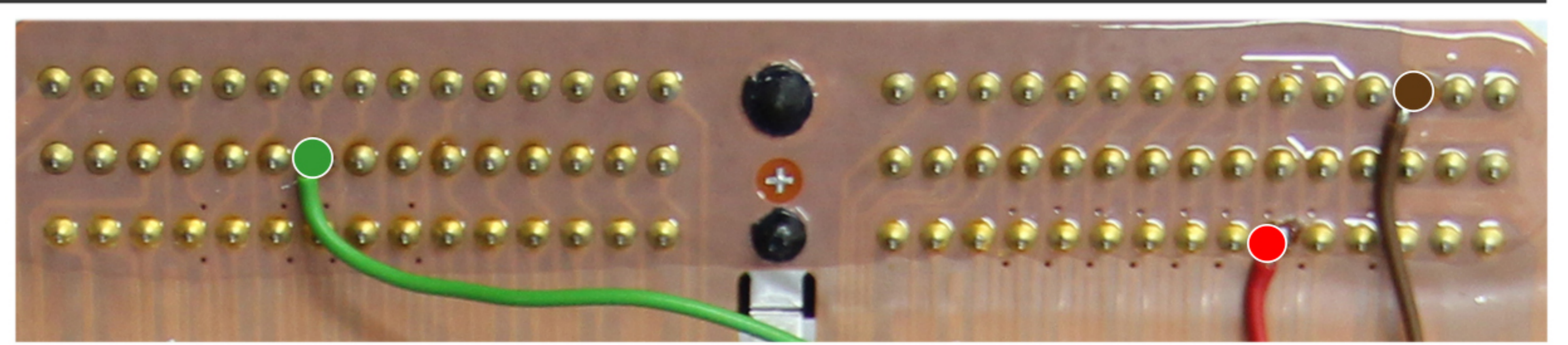
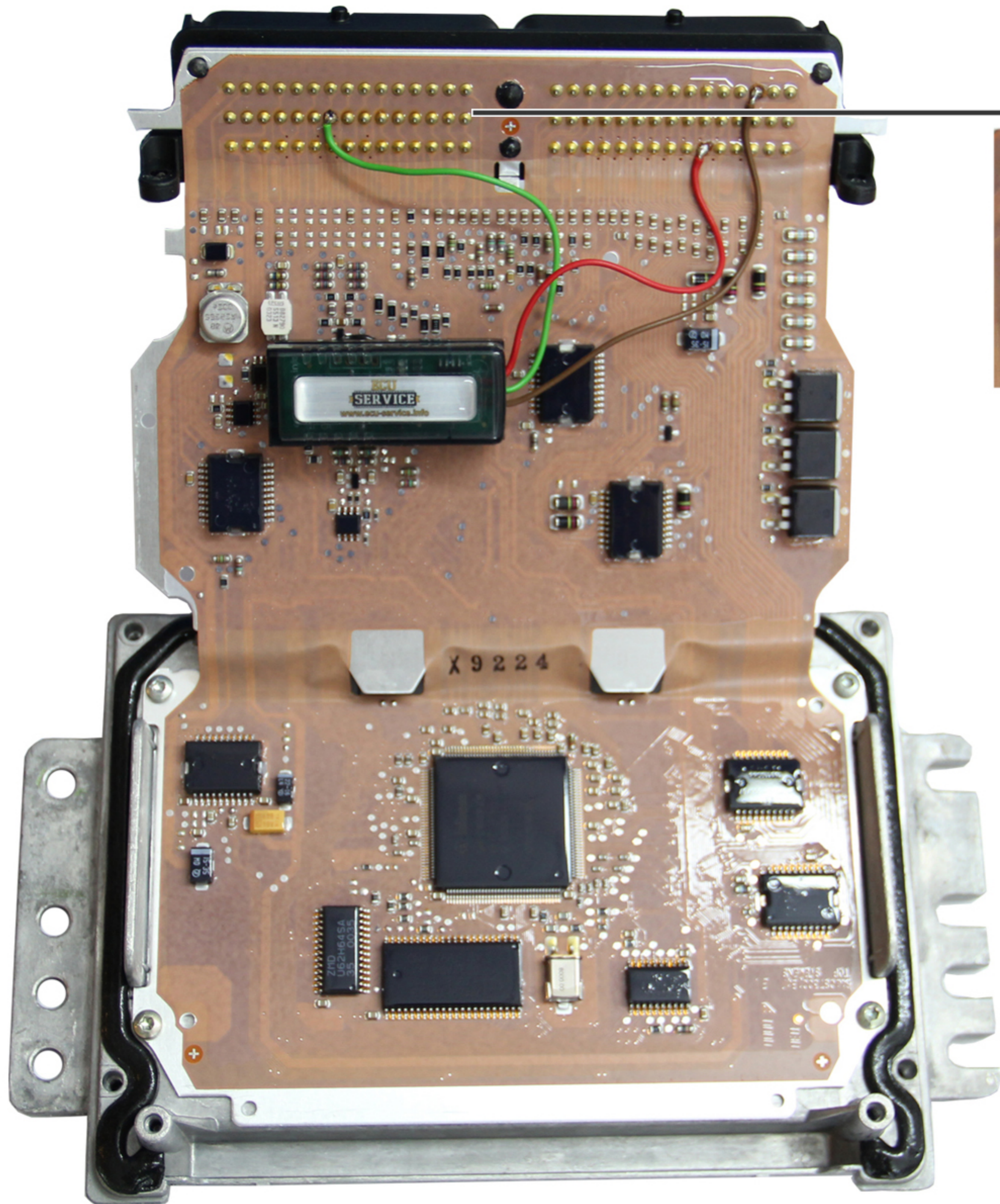
CUT OFF D11 PIN

— **GND** 3 PIN

— **IMMO** 11 PIN

— **12V** 32 PIN

Matiz KEMSCO ECU



— **GND** 3 PIN

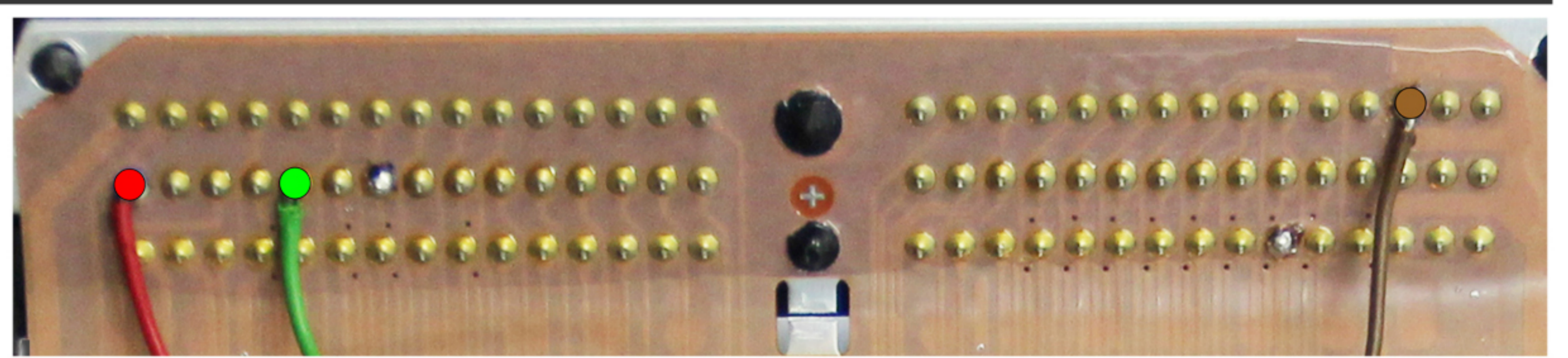
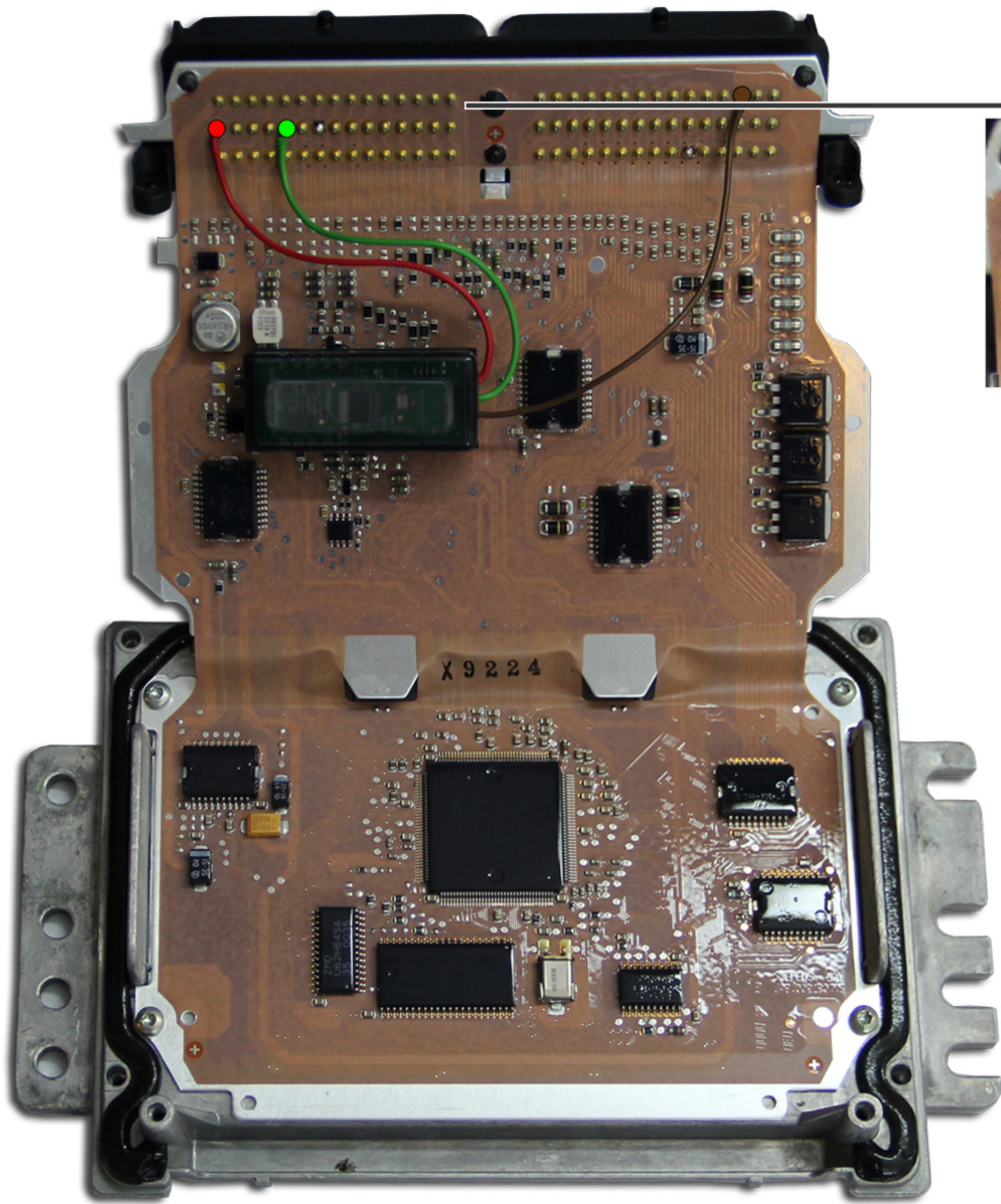
— **IMMO** 56 PIN

— **12V** 66 PIN



CUT OFF D56 PIN

Tacuma KEMSCO ECU



— **GND** 3 PIN

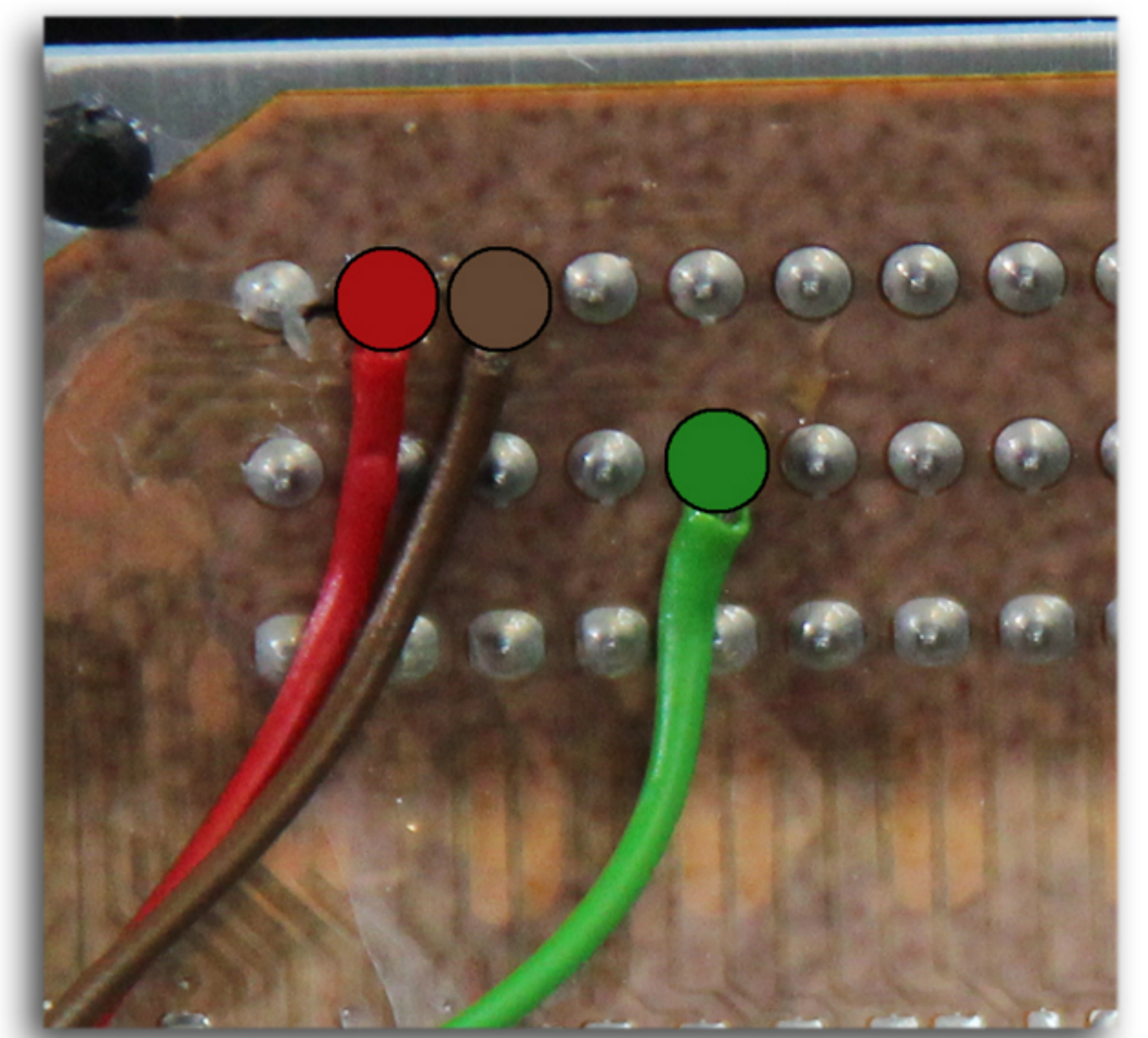
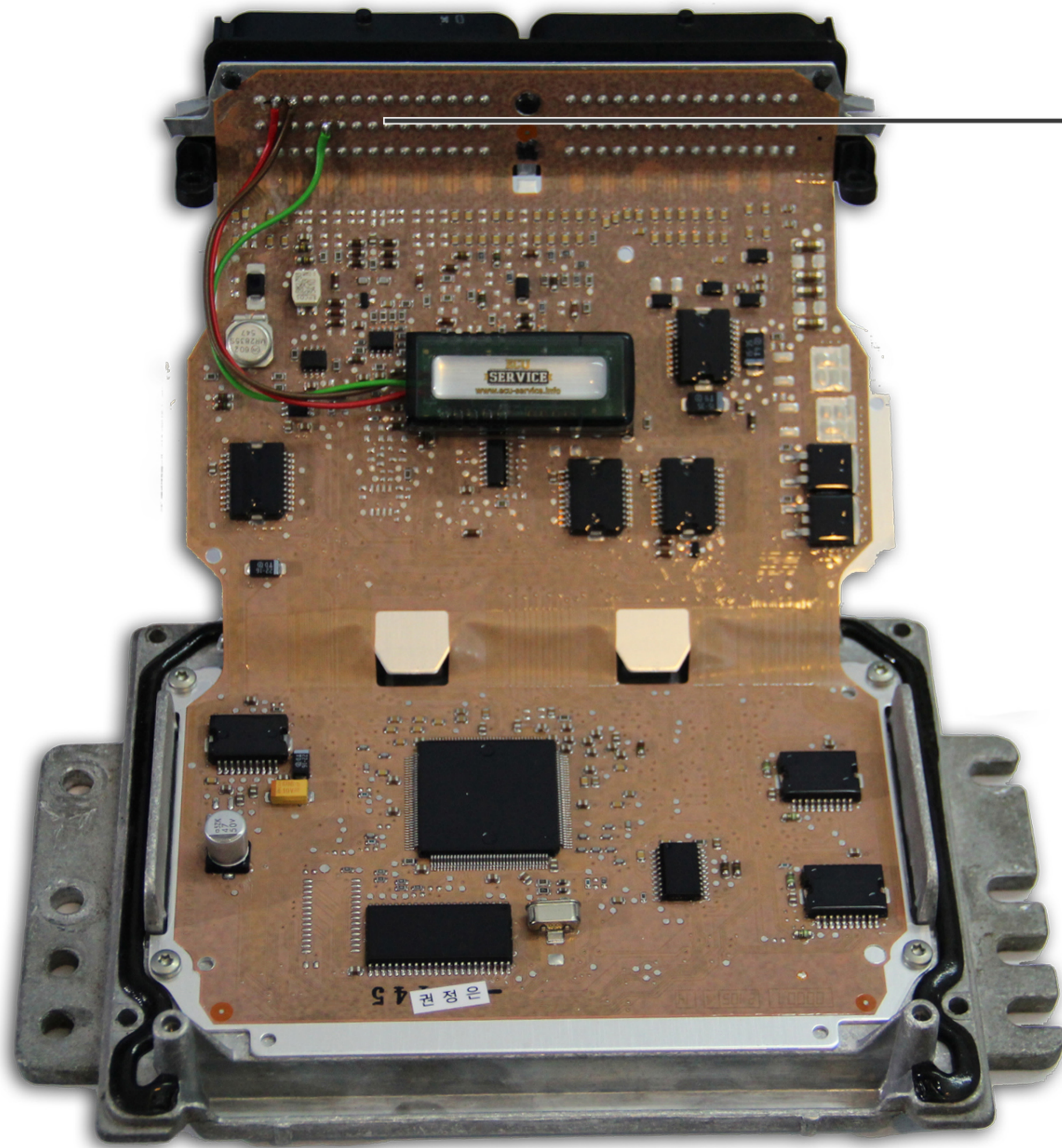
— **IMMO** 56 PIN

— **12V** 60 PIN



CUT OFF D56 PIN

Kalos SIRIUS D42 ECU 1.2



— **GND** 28 PIN

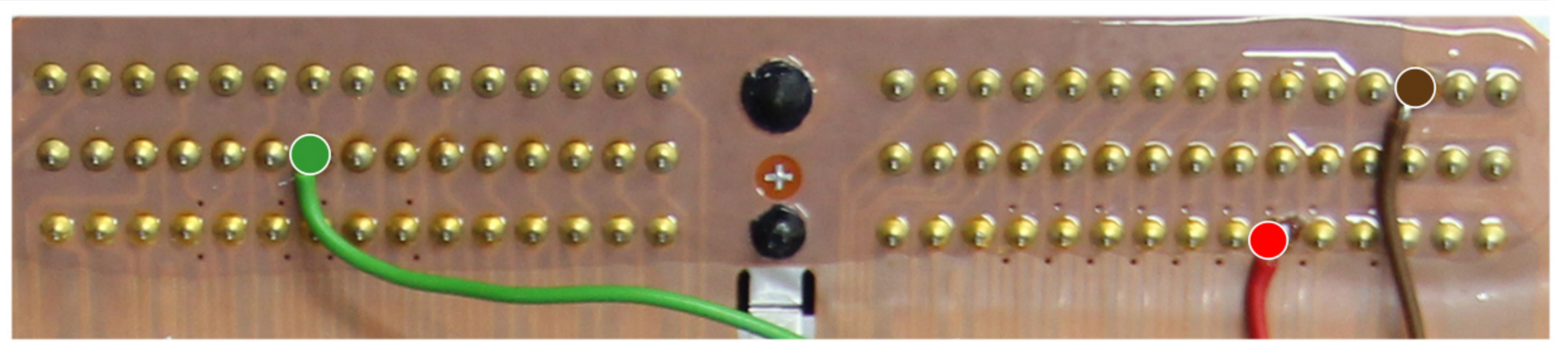
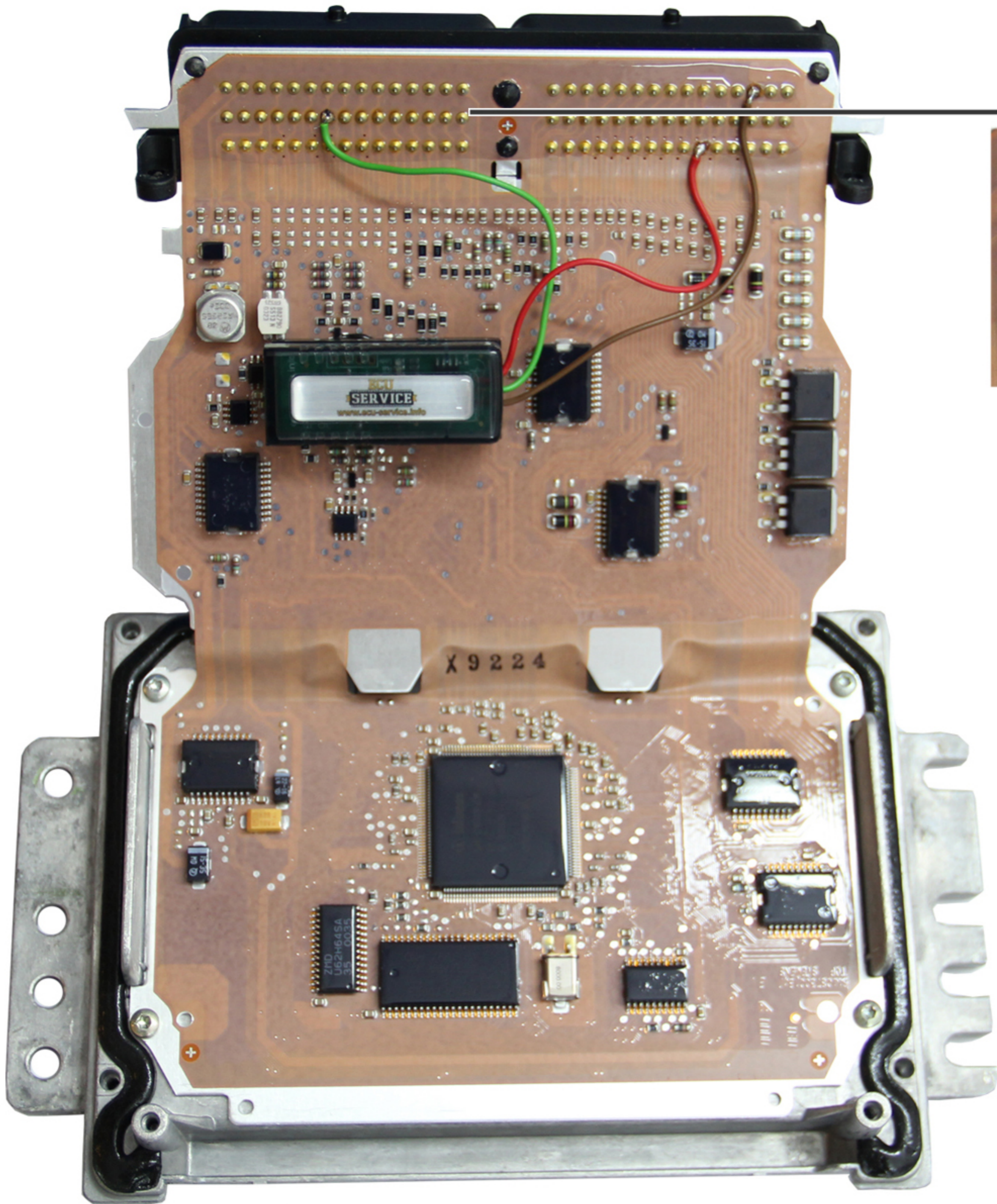
— **IMMO** 56 PIN

— **12V** 29 PIN



CUT OFF D56 PIN

Chevrolet Spark D32 ECU



— **GND** 3 PIN

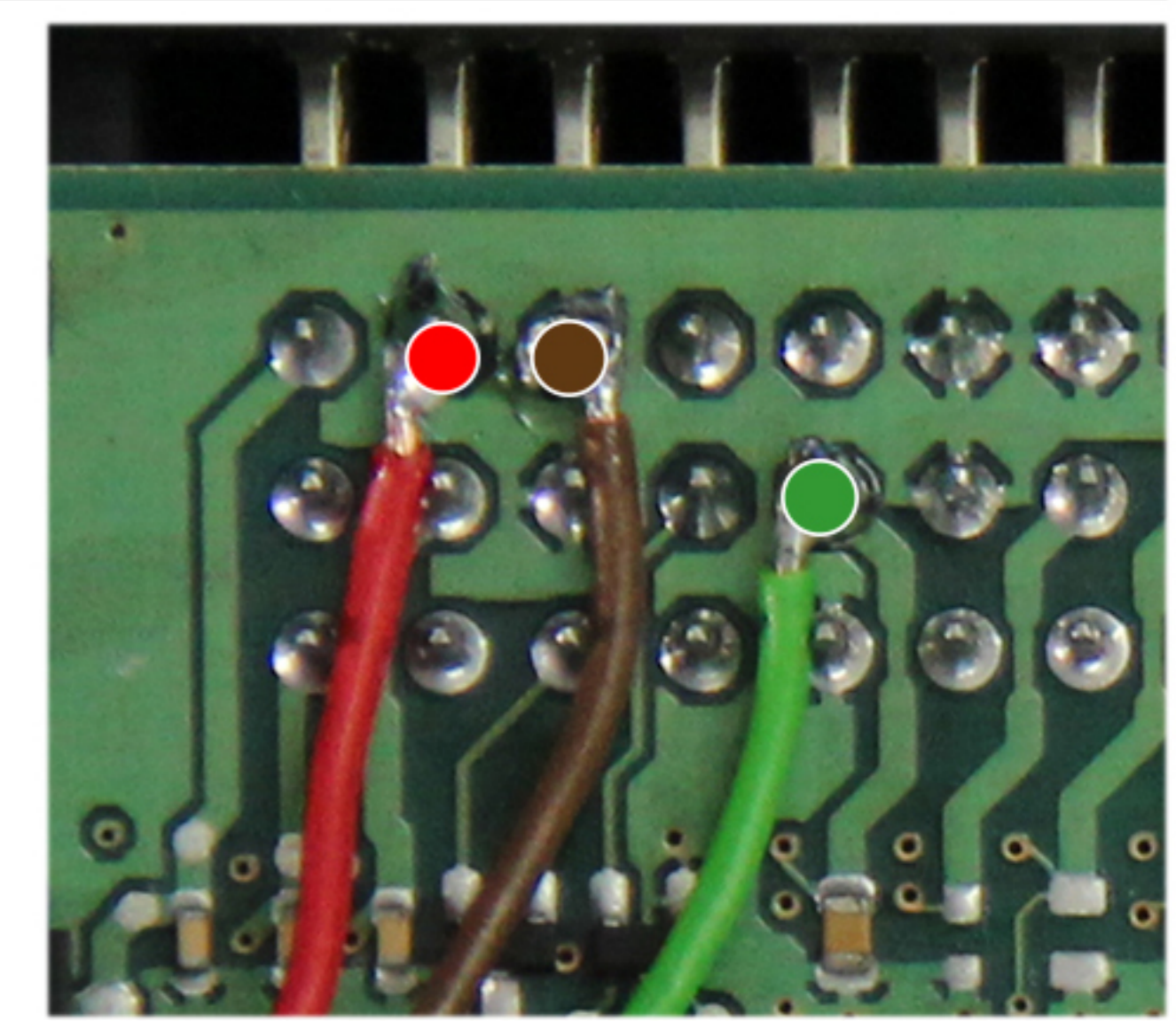
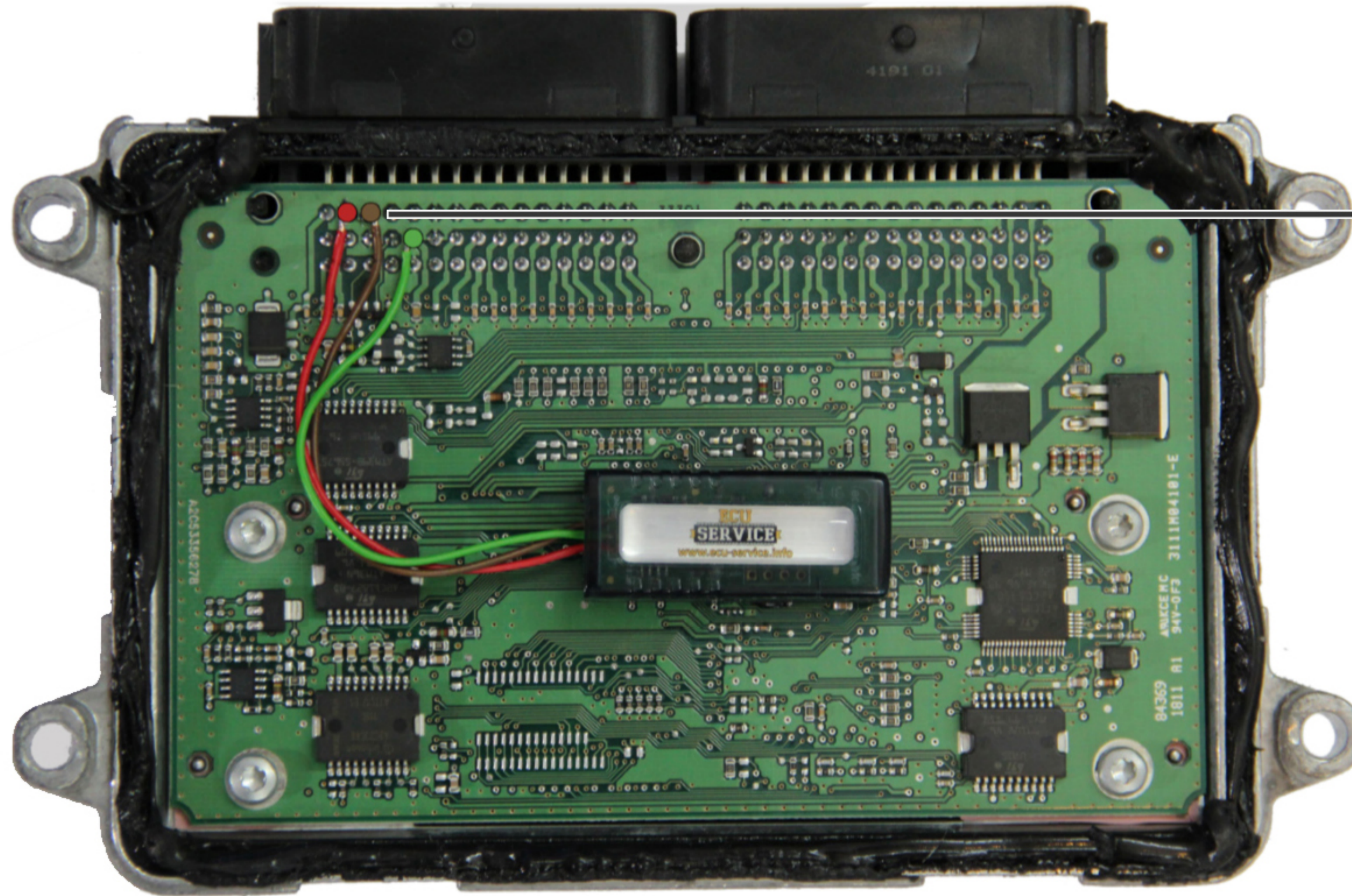
— **IMMO** 56 PIN

— **12V** 66 PIN



CUT OFF D56 PIN

Chevrolet Spark D52 ECU



— **GND** 28 PIN

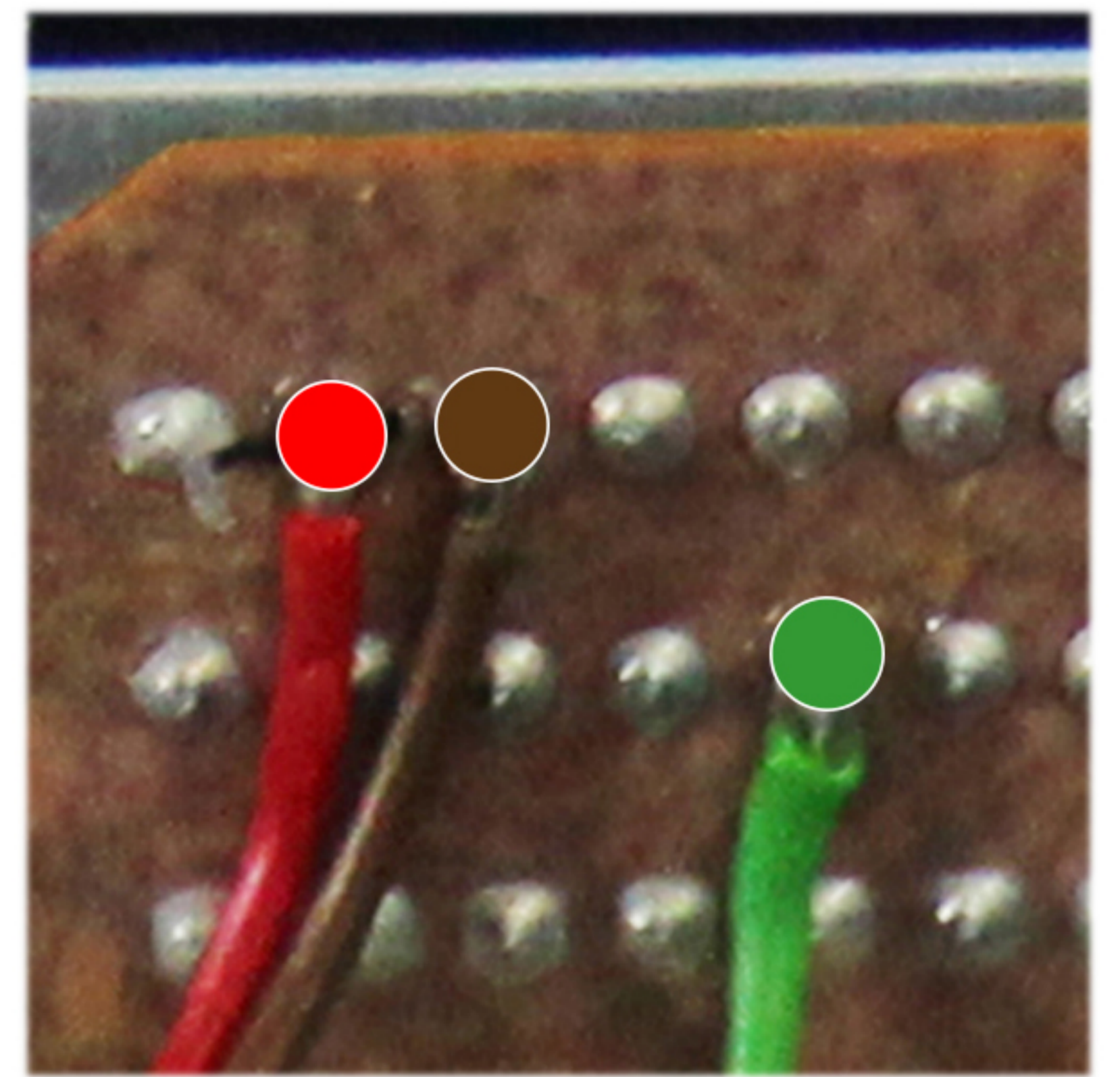
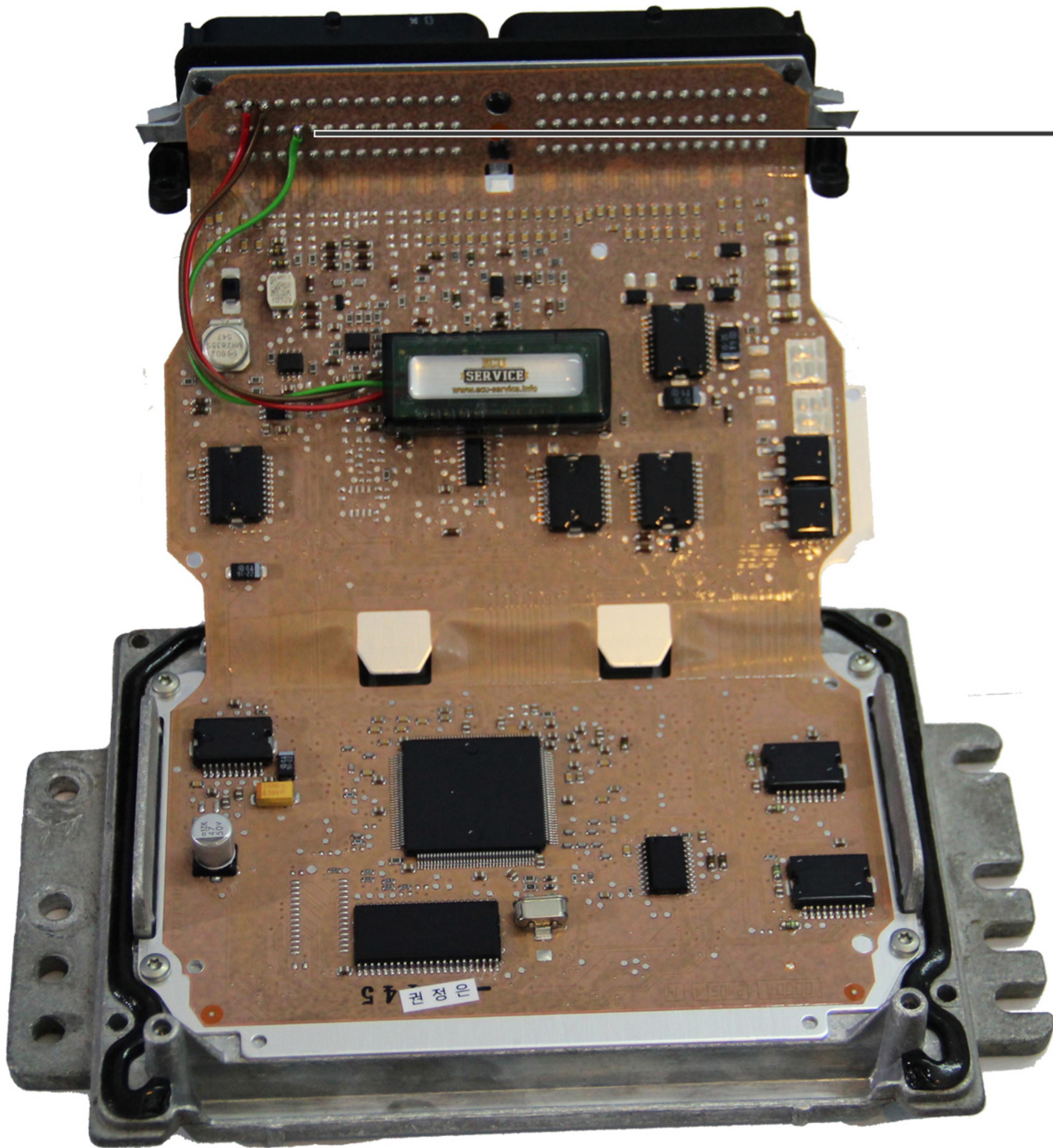
— **IMMO** 56 PIN

— **12V** 29 PIN



CUT OFF D56 PIN

Chevrolet Aveo 4R ECU 1.2



— **GND** 28 PIN

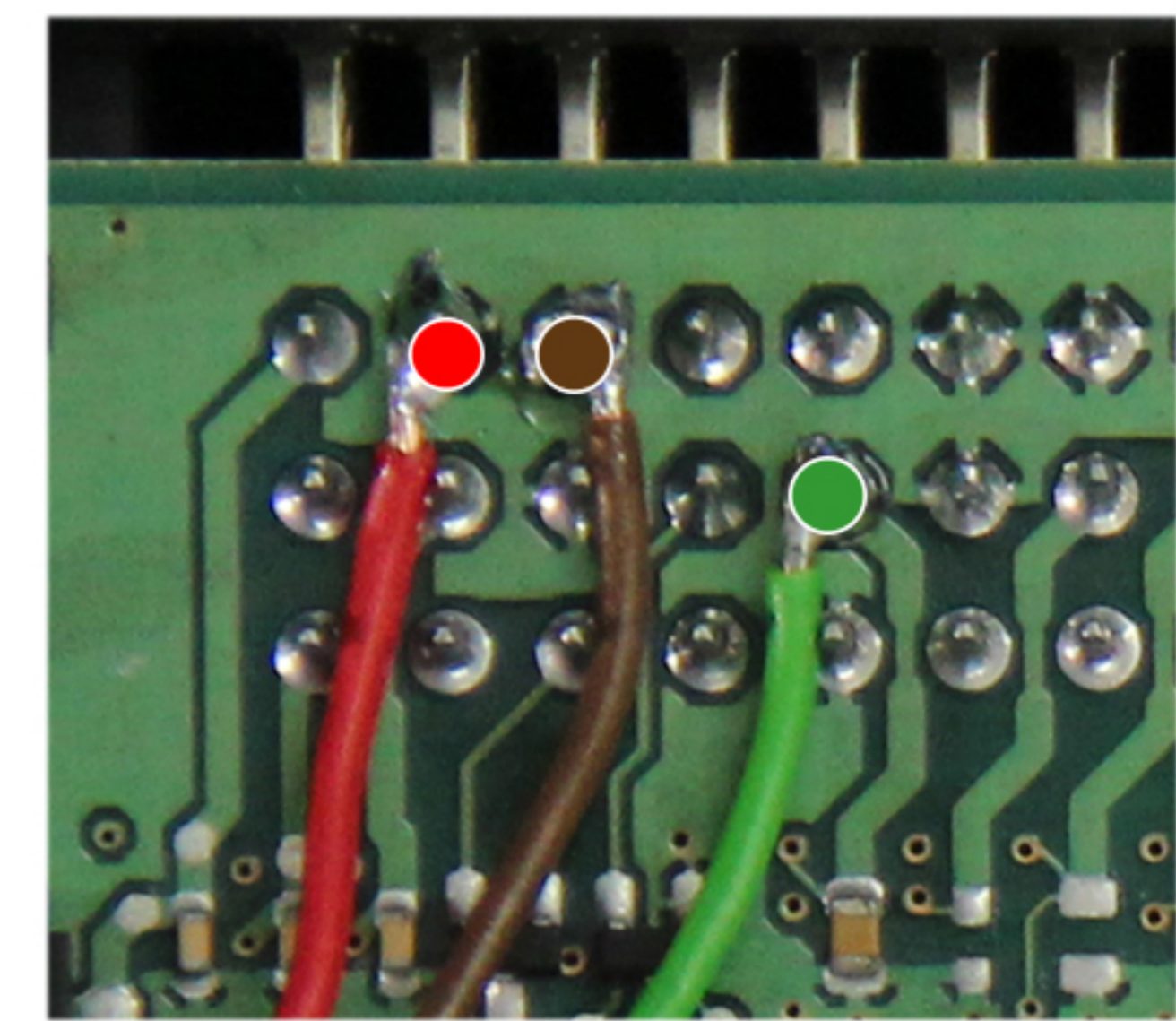
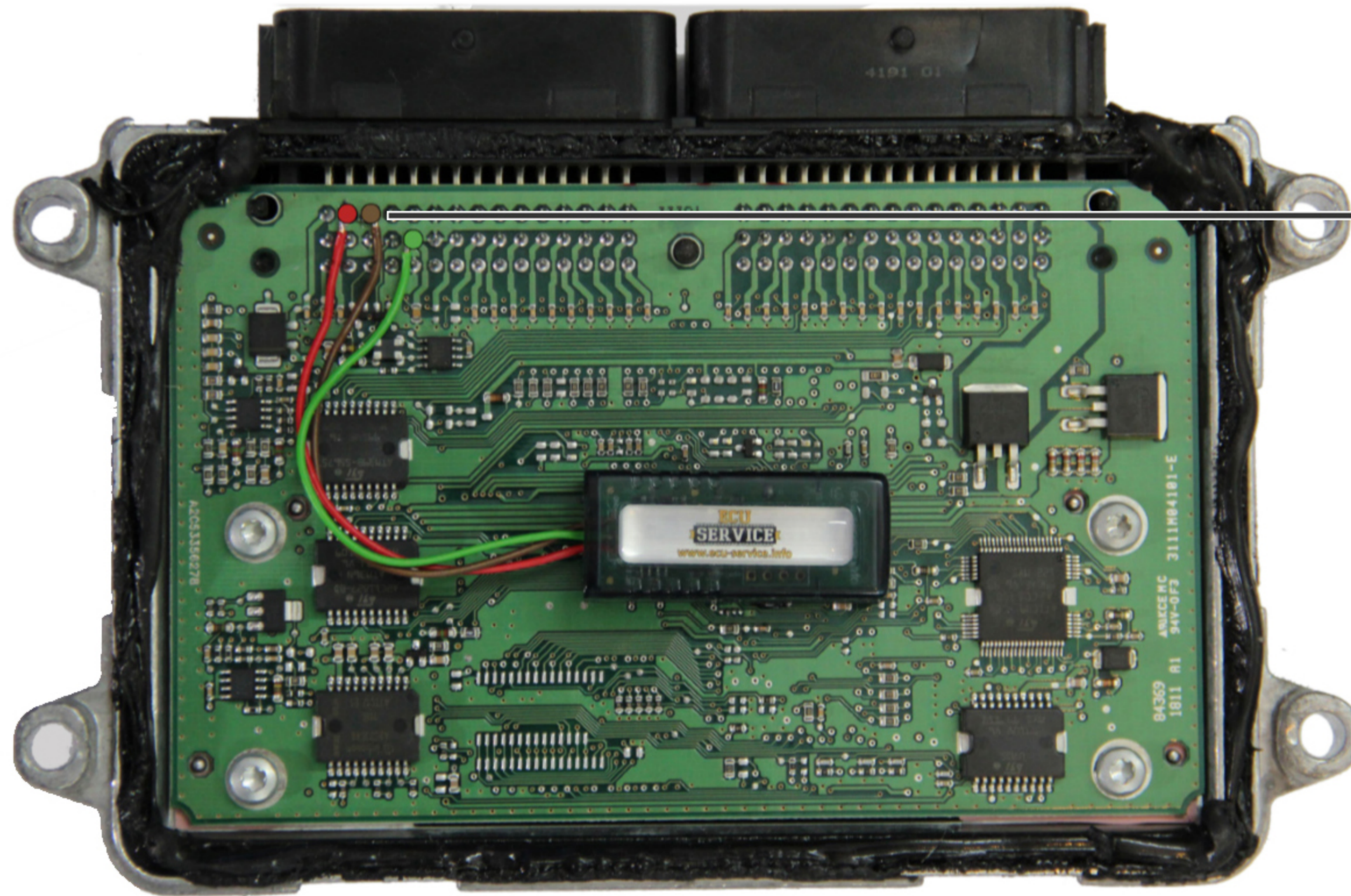
— **IMMO** 56 PIN

— **12V** 29 PIN



CUT OFF D56 PIN

Chevrolet Aveo 42R ECU



— **GND** 28 PIN

— **IMMO** 56 PIN

— **12V** 29 PIN

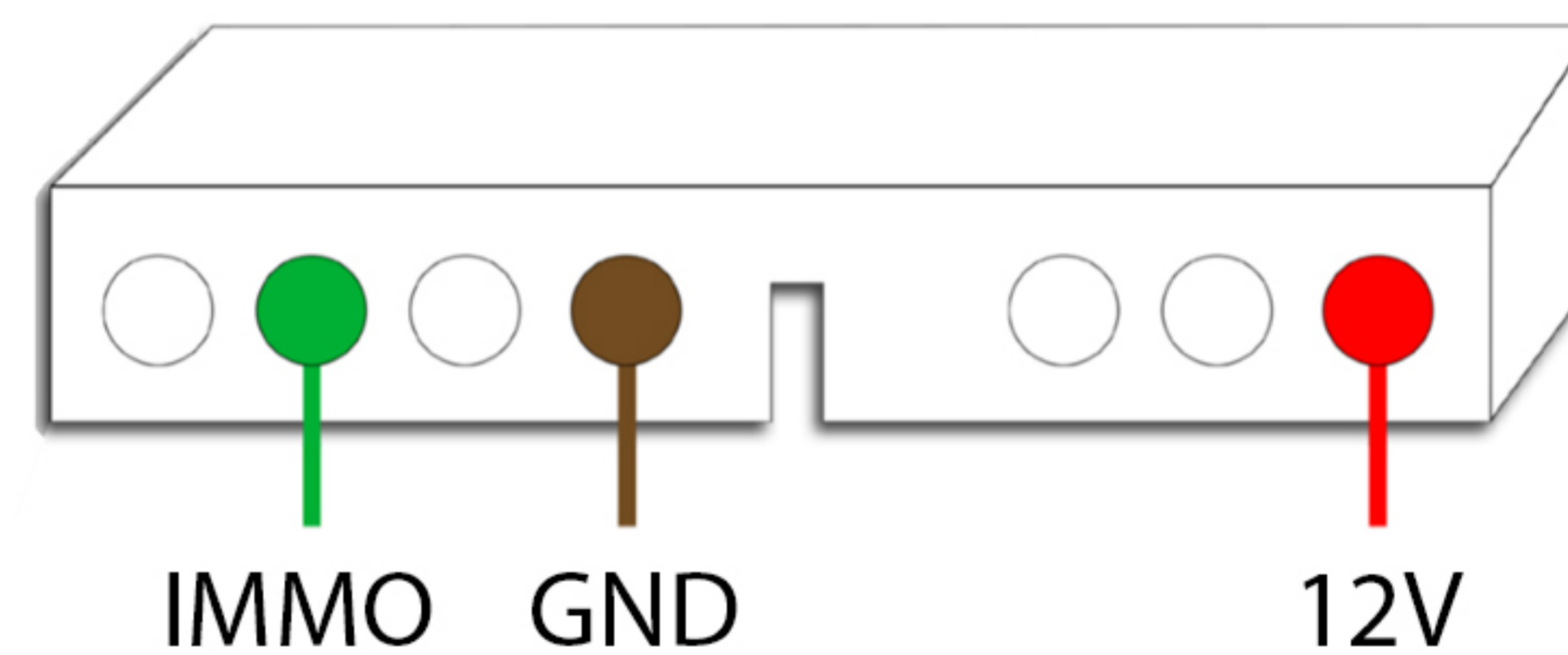


CUT OFF D56 PIN

Chevrolet Aveo 1.4 16V DELPHI ECU

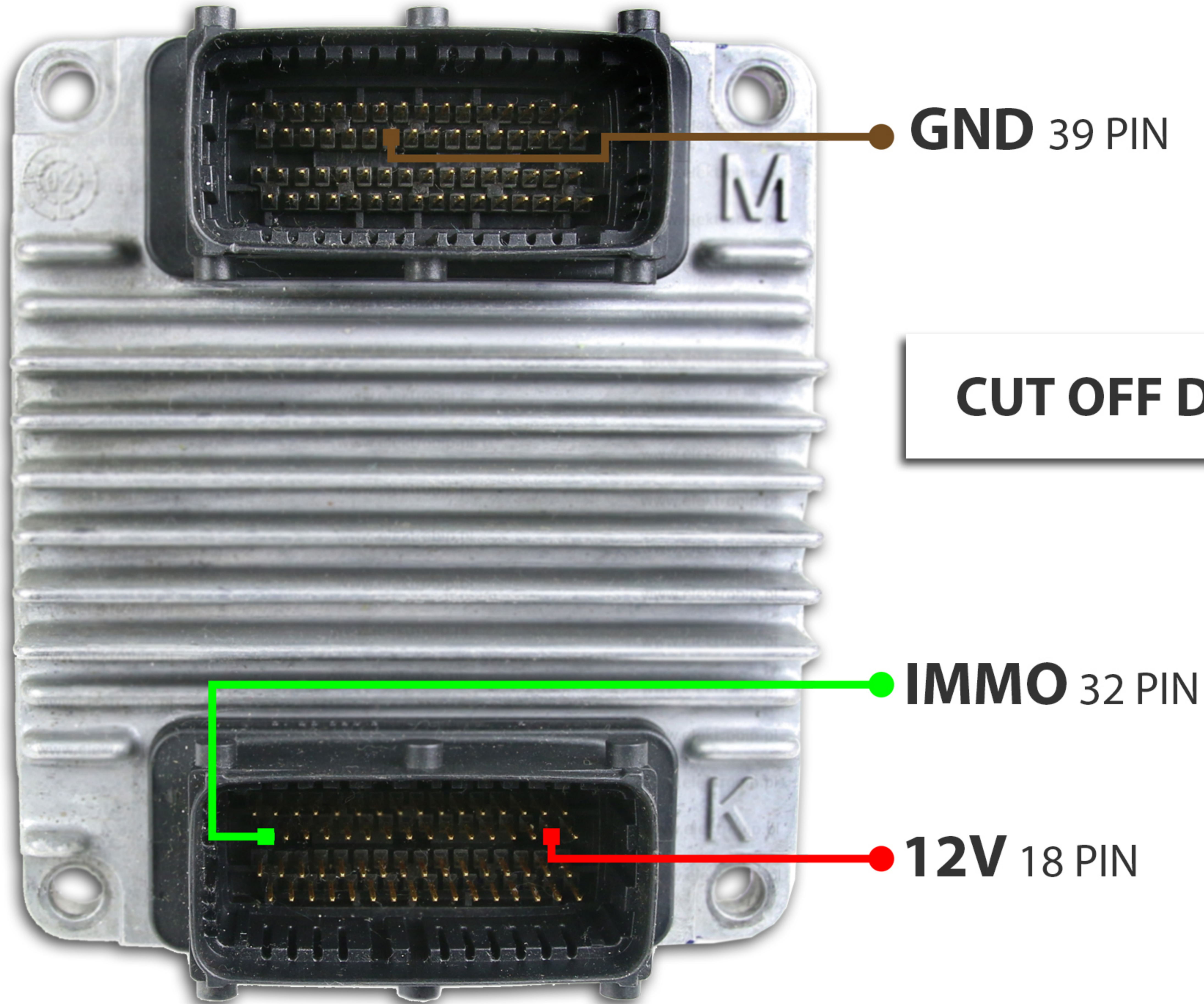


**Plug from immo car
instalation direction**



**Disconnect immo box,
and connect emulator !**

Lanos hybrid ECU 1.4 OHC & Rezzo hybrid ECU 2.0 DOHC



IF YOU HAVE ANY PROBLEM PLEASE
CONTACT OUR SUPPORT BY SKYPE:

 **ECU-SERVICE_SUPPORT**



ECU-SERVICE.INFO

THE MANUAL SHOWS THE EXAMPLE ECU
MEMORY CONTENTS.
EACH ECU HAS DIFFERENT CONTENT
(PIN, ISK, SYNCHRO).